

Roll No.

--	--	--	--	--	--	--	--	--	--	--	--

Total No. of Pages : 4

Total No. of Questions : 09

B.Tech. (AE) (Sem.-3)
MACHINE DRAWING
Subject Code : BTAE-306 (2011 Batch)
Paper ID : [A1156]

Time : 3 Hrs.

Max. Marks : 60

INSTRUCTION TO CANDIDATES :

1. SECTION-A is COMPULSORY consisting of TEN questions carrying TWO marks each.
2. SECTION-B contains FIVE questions carrying FIVE marks each and students has to attempt any FOUR questions.
3. SECTION-C contains THREE questions carrying TEN marks each and students has to attempt any TWO questions.

SECTION-A

1. Write briefly :

- a. What is difference between allowance and tolerance?
- b. Why sectional views are used in drawing?
- c. The root angles in BIS metric thread and BSW threads are respectively _____ and _____?
- d. Why are split muff coupling used in preference with solid muff?
- e. Why brasses are used in connecting rod ends and why are these made of soft metals?
- f. What is blow-off cock and where it is used?
- g. What are the functions of steam stop valve?
- h. What is the advantage of providing bush in a bearing and what is the material of bush?
- i. Draw the free hand sketch of hexagonal bolt.
- j. What is the use of tailstock in a lathe and how is it operated?

8. Draw the front view and top view of foot step bearing as shown in figure 2.

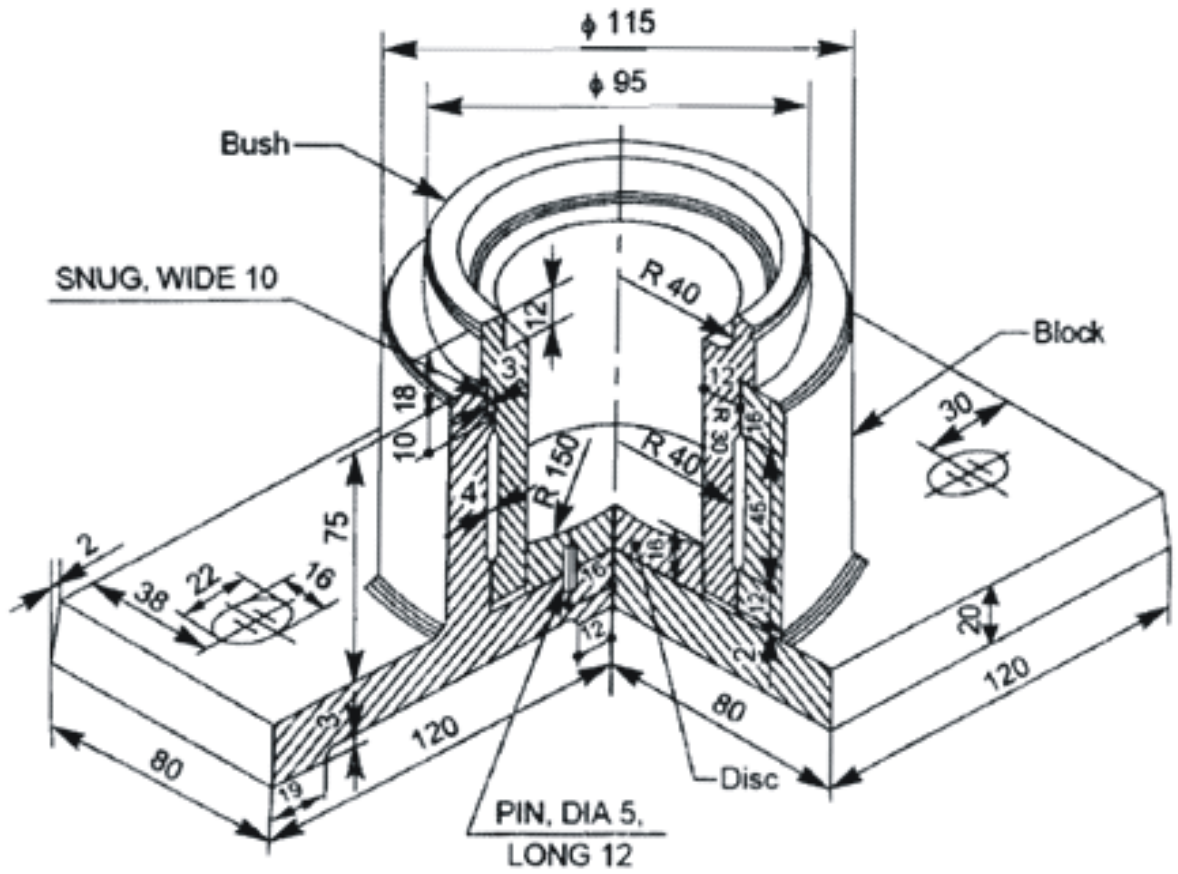


Figure. 2.

9. Figure-3 shows the details of a Lathe tail stock. Assemble all the parts and draw the Front View.

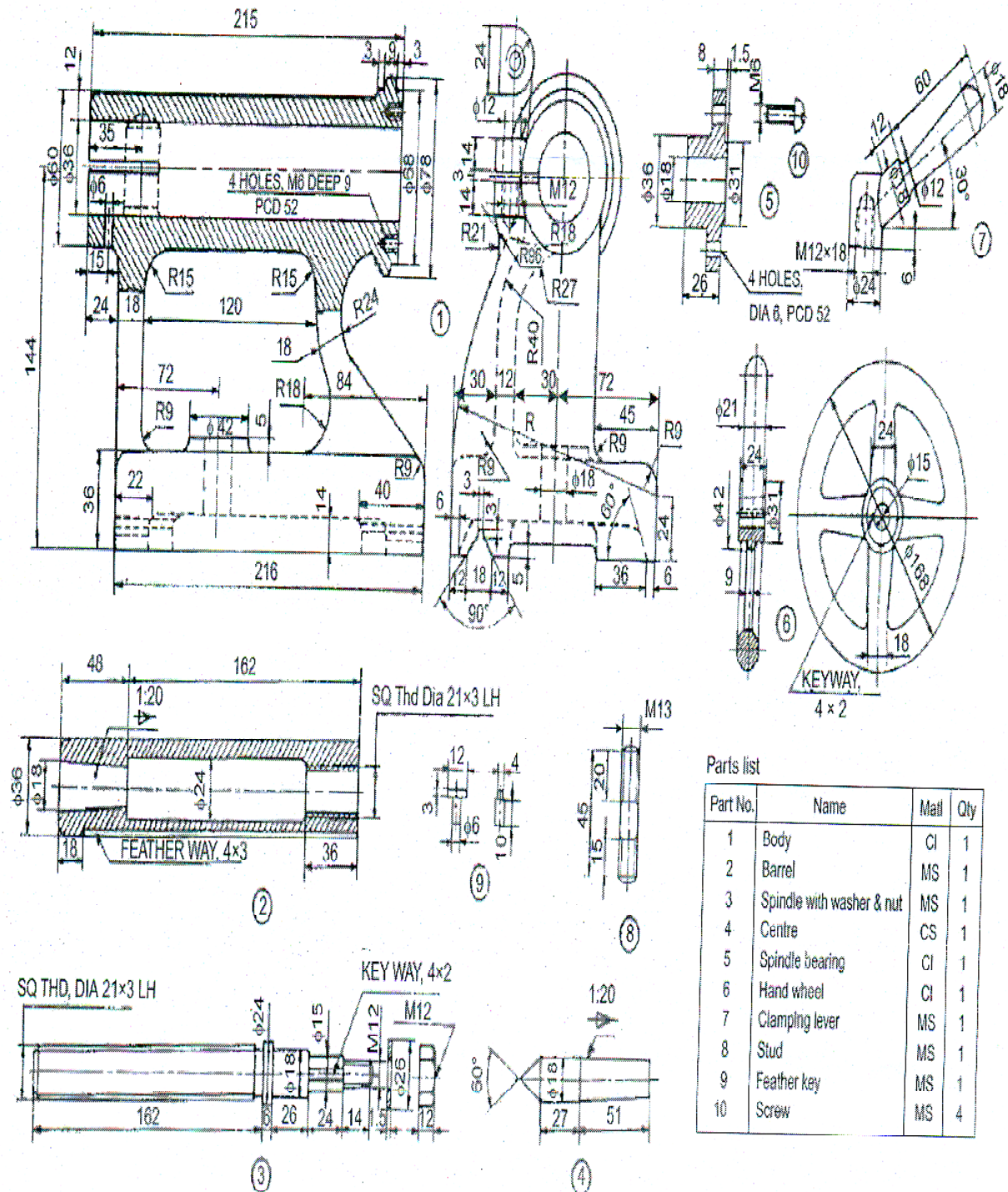


Figure. 3.